

2006 15 - 13

Yousif1964@yahoo.com

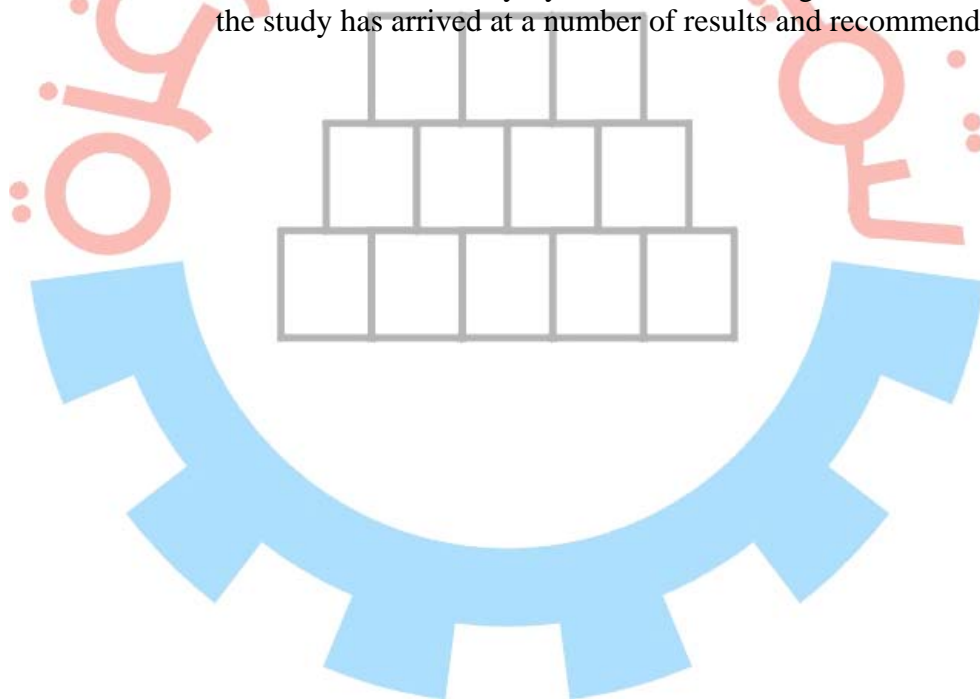
2006



2005

### and Future challenge The Unemployment in Gaza strip Problems and Solution

The study discusses Unemployment in Gaza strip, Population Growth and Size, Population distribution in Gaza strip, The economically active population, (Labour Force) The distribution of Persons Aged 15 Years and Over in Palestinian Territory by Labour Force Component and Region, Unemployment Rate for Persons Aged 15 Years and Over in the Palestinian Territory by Years of schooling and sex, . Finally, the study has arrived at a number of results and recommendations.



2005

مؤتمر تنمية وتطوير قطاع غزة

1. \_\_\_\_\_  
2. \_\_\_\_\_  
3. \_\_\_\_\_

1. \_\_\_\_\_  
2. \_\_\_\_\_  
3. \_\_\_\_\_

1. \_\_\_\_\_  
2. \_\_\_\_\_

1. \_\_\_\_\_  
2. \_\_\_\_\_

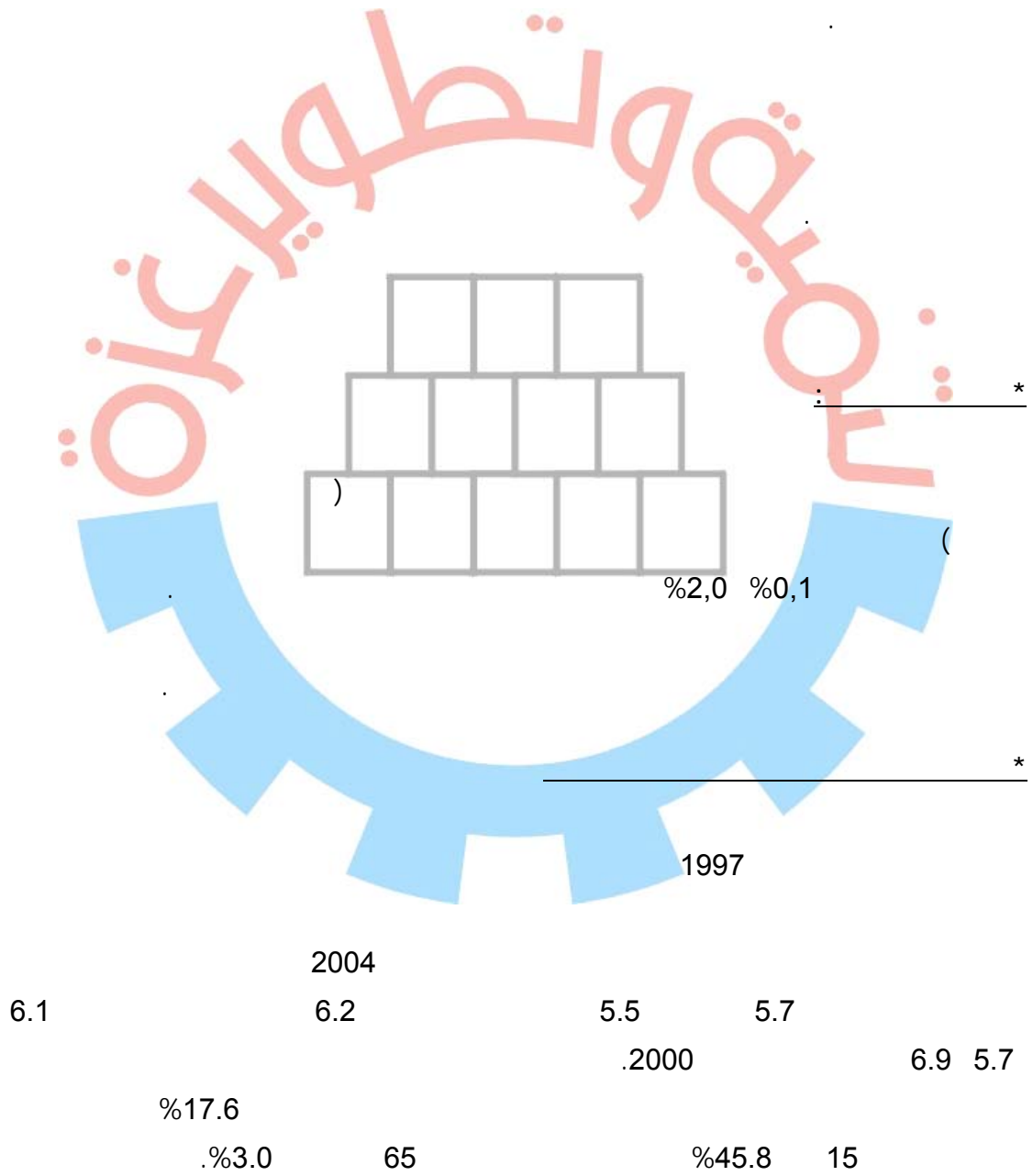
1. \_\_\_\_\_  
2. \_\_\_\_\_

1. \_\_\_\_\_  
2. \_\_\_\_\_  
3. \_\_\_\_\_

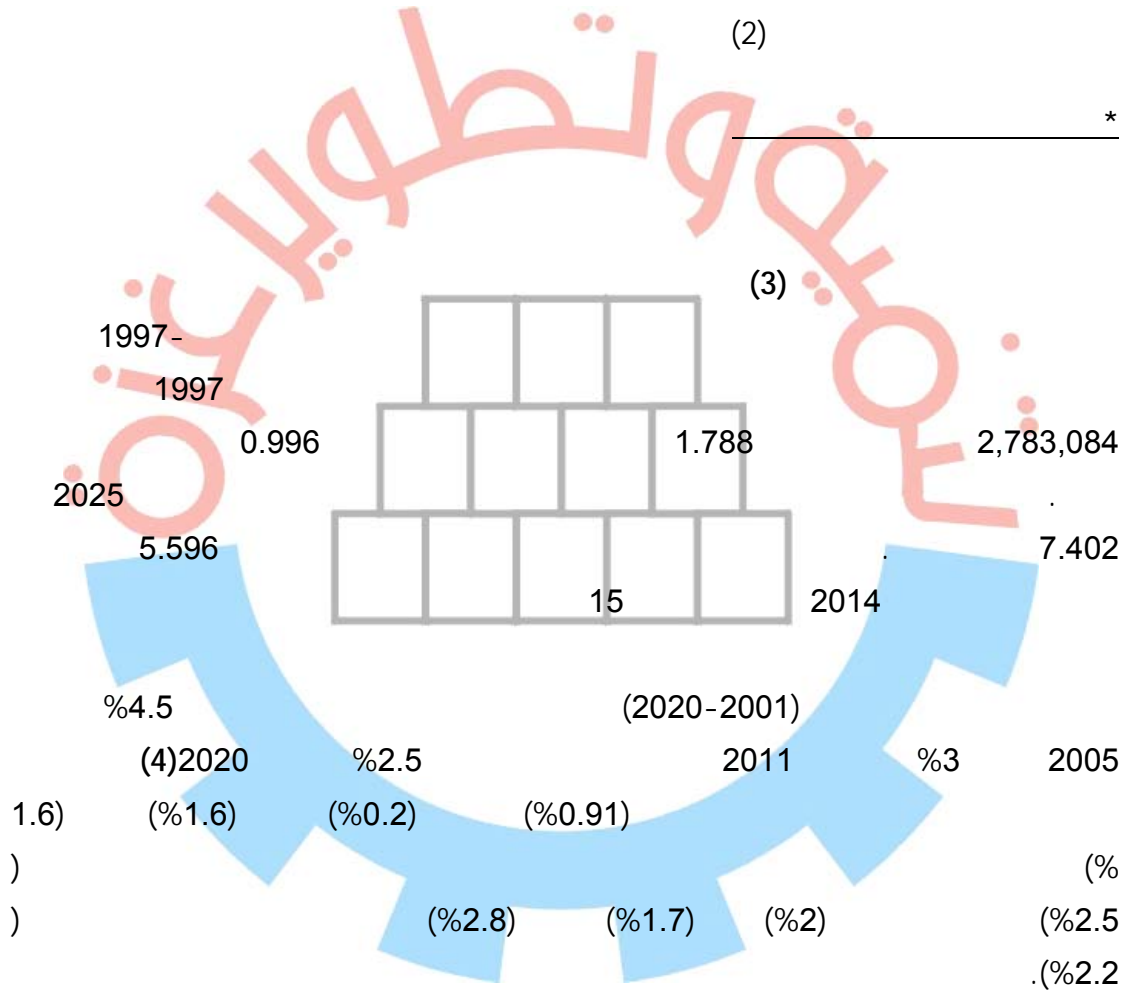
1. \_\_\_\_\_  
2. \_\_\_\_\_  
3. \_\_\_\_\_



\* : \_\_\_\_\_





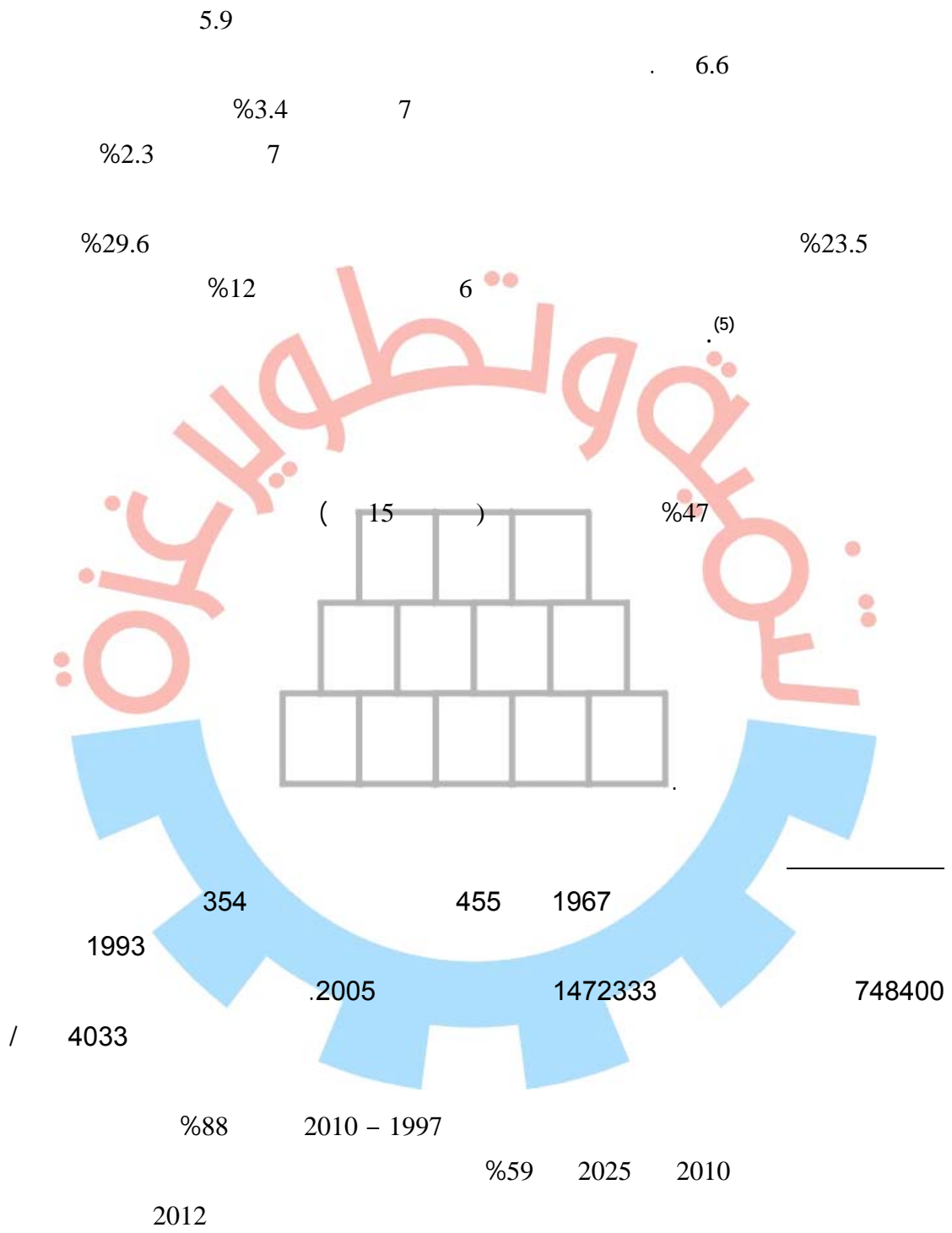


<sup>2</sup> Office of the United Nations Special Co-ordinator, Report on the Palestinian Economy, Gaza, Spring, 2001, p2

<sup>3</sup> Bongaarts, J. (1992). Population growth and global warming. Population and Development Review (New York), No. 37, pp. 299-319.

<sup>4</sup> Bongaarts, J. (1992). Population growth and global warming. Population and Development Review (New York), No. 37, pp. 299-319.





(5) United Nation, Demographic year Book, special Issue, Population Agening and situation of Elderly persons, New York, 1993.p.p 90-93

3.97

2005 – 1997

%4.52 %

%2.4 %4.2

%2.0 %3.8

2025 -1997

(1)

(2020 -2005)

(1)

(6)

10.9	3.8	42.9	5.0	2005
8.6	3.4	40.4	4.5	2010
-	3.2	36.4	3.3	2015
-	3.0	31.8	2.8	2020
-	2.9	27.8	2.4	2025

1999 –

2025-1997

109-108

(-)

109-108

1999 –

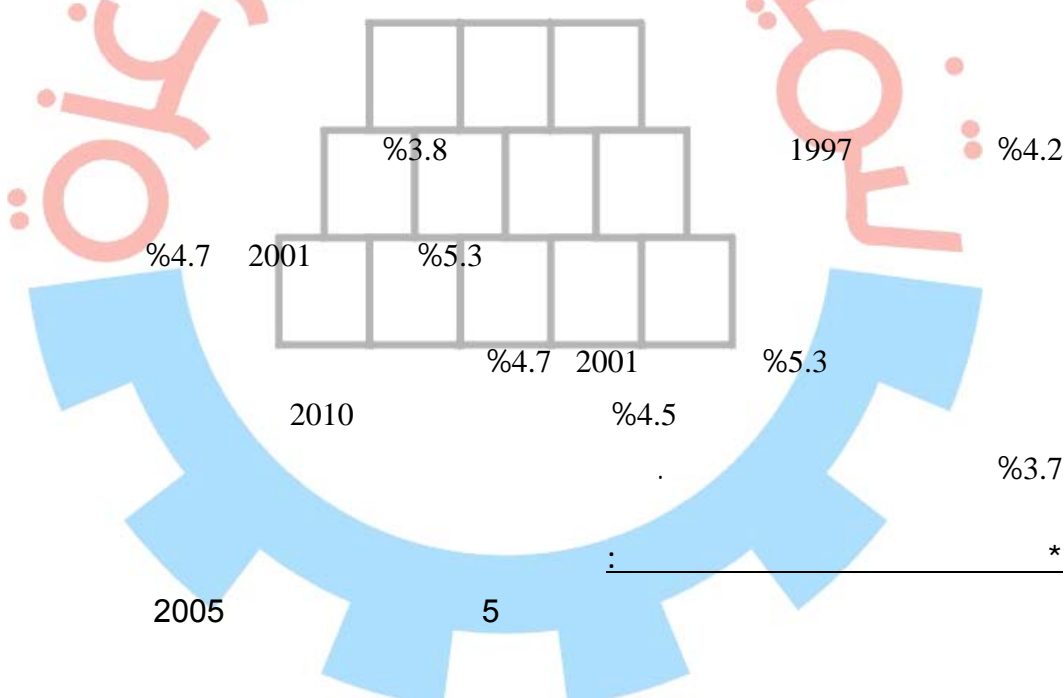
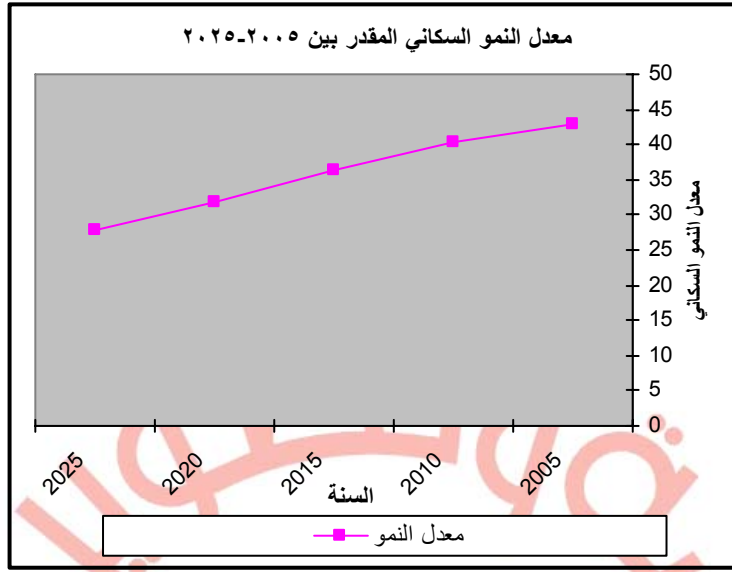
2025-1997

6

(-)



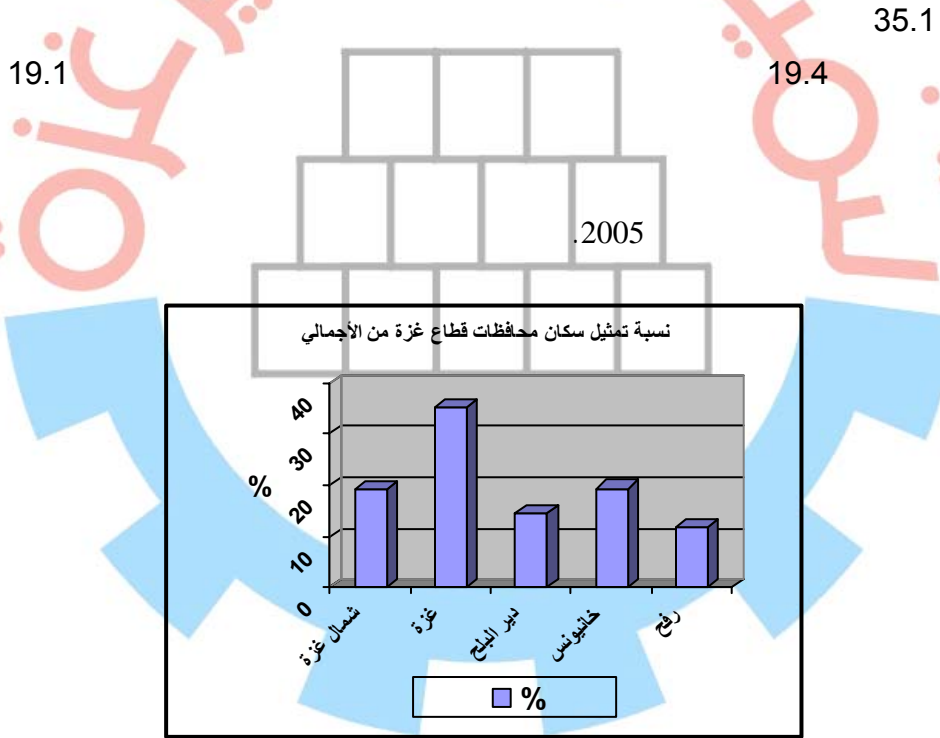




(7) 2005

(2)

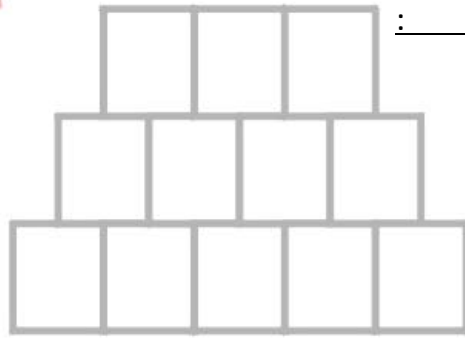
%		
19.1	281727	
35.1	516882	
14.5	213057	
19.4	285613	
11.9	175054	
100	1472333	



(<sup>9</sup>).2005

( 3 )

94646	
89085	
65763	
37027	
24789	
12253	
50173	
61275	



))

))

(9)

8

<sup>9</sup> UN, methods of analysis census data on economic activities of the population new york ,1968 . pp . 205



( )

( ) (10)

.2004 ( 15)

( 15)

( 3)

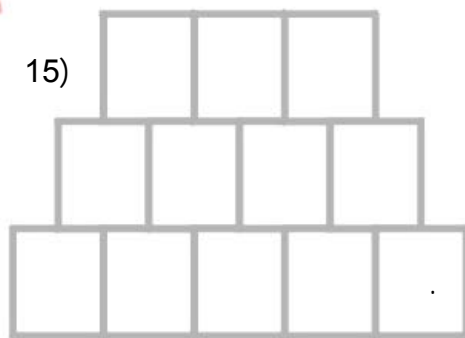
(<sup>11</sup>).2004

100	63.3	36.2	
-----	------	------	--

15 %63.3

36.2

( 15)



1994

58

%70 2000

%58.7

)

10

.6 1967-

10 2004

2004 -

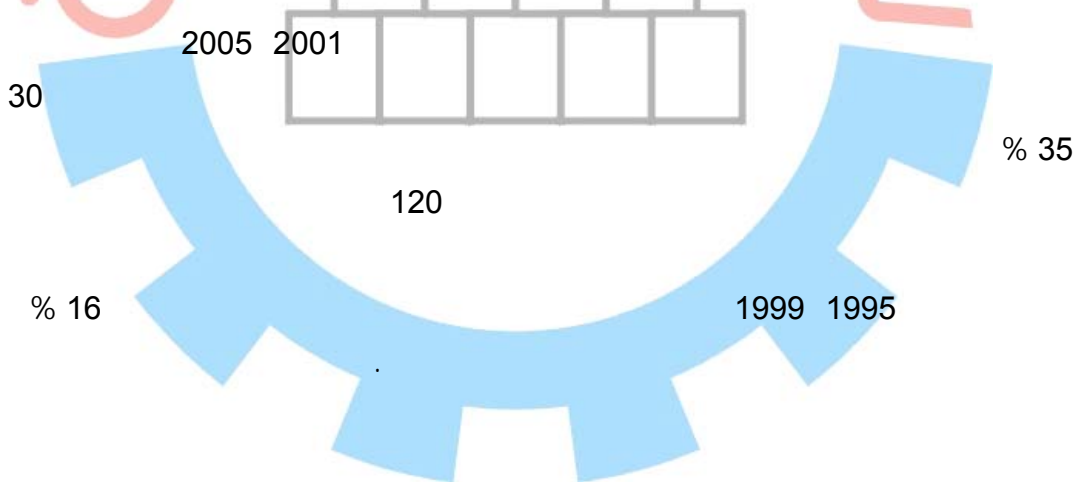
11



2001  
%65.9 2000 %41.3  
(12) 2001

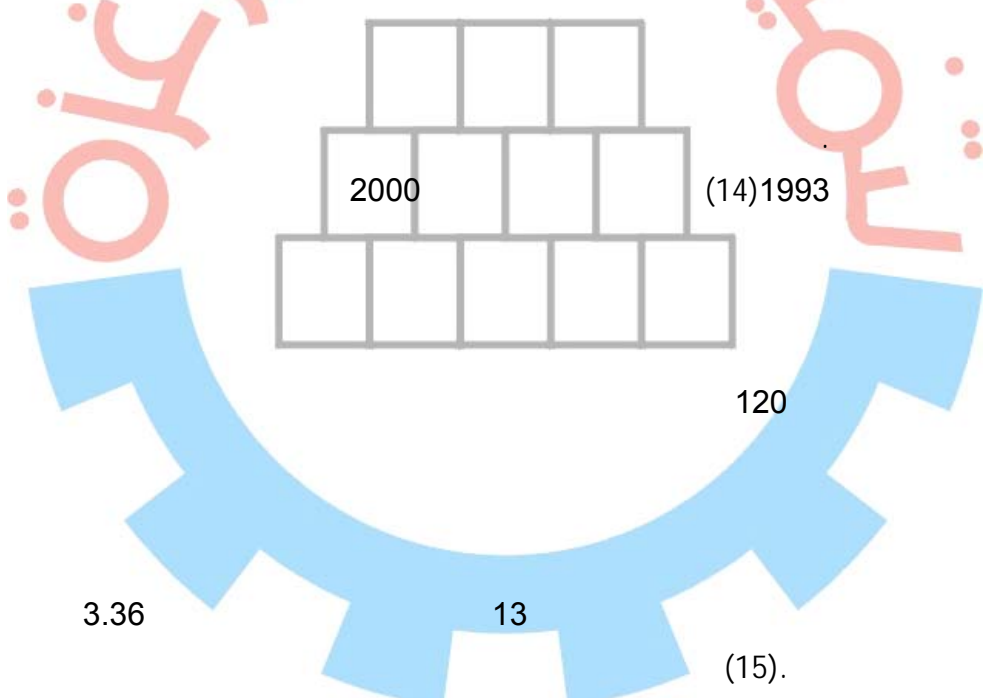
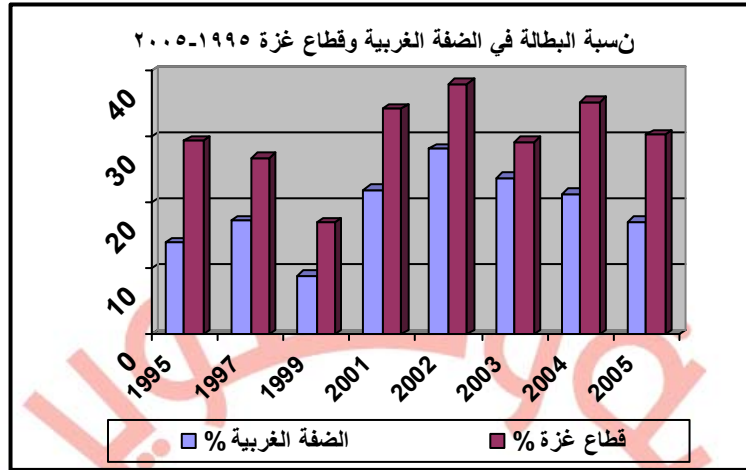
1999 1995  
(13)1999 1995 (4)

%	%	
29.4	13.9	1995
26.8	17.3	1997
16.9	9.0	1999
34.2	22.0	2001
38.0	28.2	2002
29.2	23.8	2003
35.2	21.4	2004
30.2	17.2	2005



<sup>12</sup> Office of the United Nations Special Co-ordinator, The Impact on the Palestinian Economy of Confrontation, Border Closures and Mobility Restrictions, Gaza, october2000-september2001, p3





14

2004 / 14-11

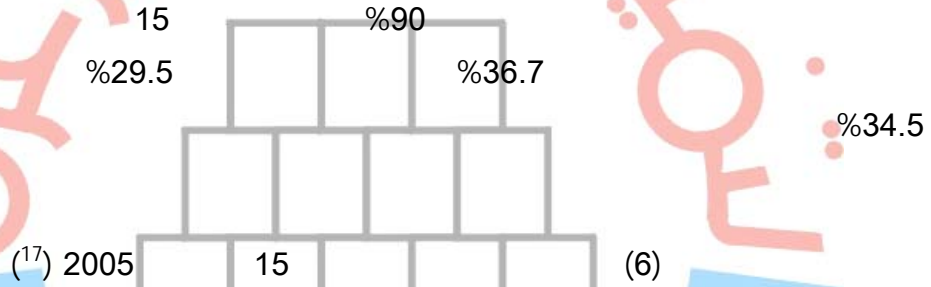
15



15 2005 %30.2

(16) : 15 (5)

36.7	63.3	100	29.5	2.2	68.3	
90.6	9.4	100	34.5	1.9	63.6	
63.5	36.5	100	30.2	2.2	67.6	



(17) 2005	15	(6)
%		
39.6		19-15
47.5		24-20
26.4		29-25
25.1		34-30
25.0		40-35
25.9		44-40
27.1		49-45
25.7		+50
30.2		

2005

16

17



% 47.5

24-20

15

: \*

2005

(6-1)

%37.2

13

%32.4

( 9-7)

.%28

.2005

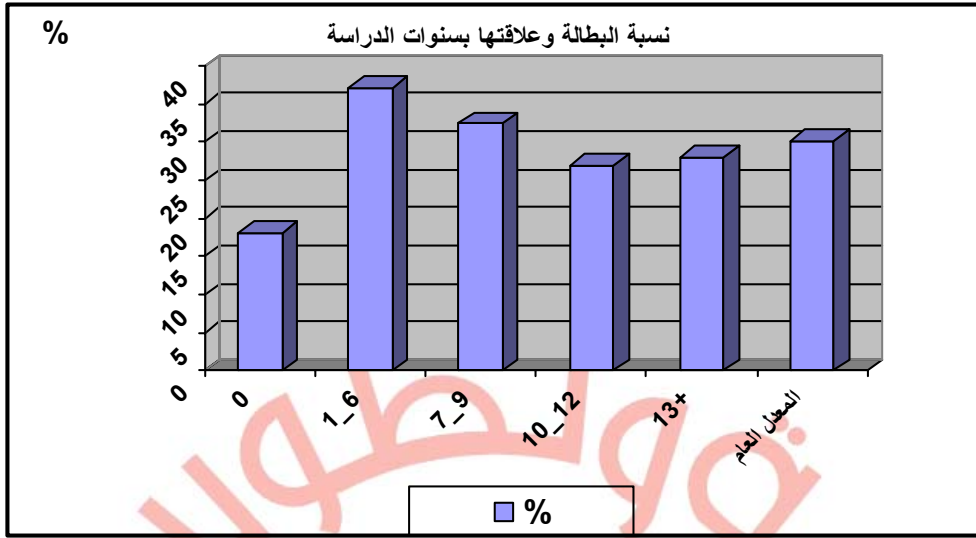
(<sup>18</sup>)2005

(7)

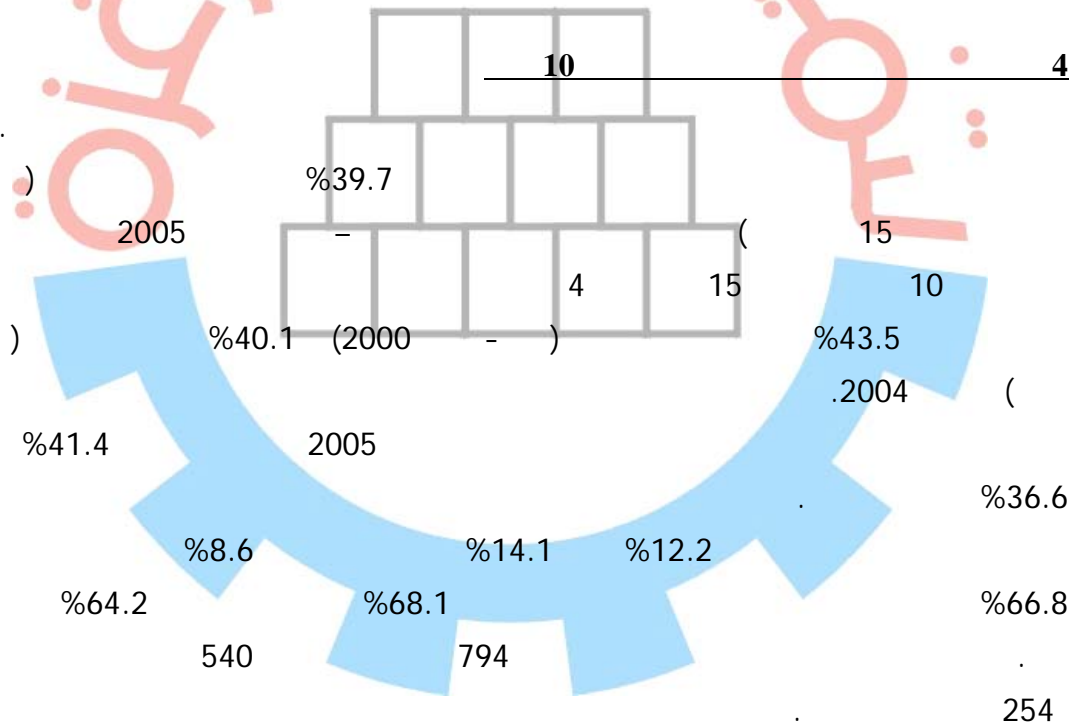
%	
18.1	0
37.2	6-1
32.4	9-7
26.9	12-10
28.0	+13
30.2	

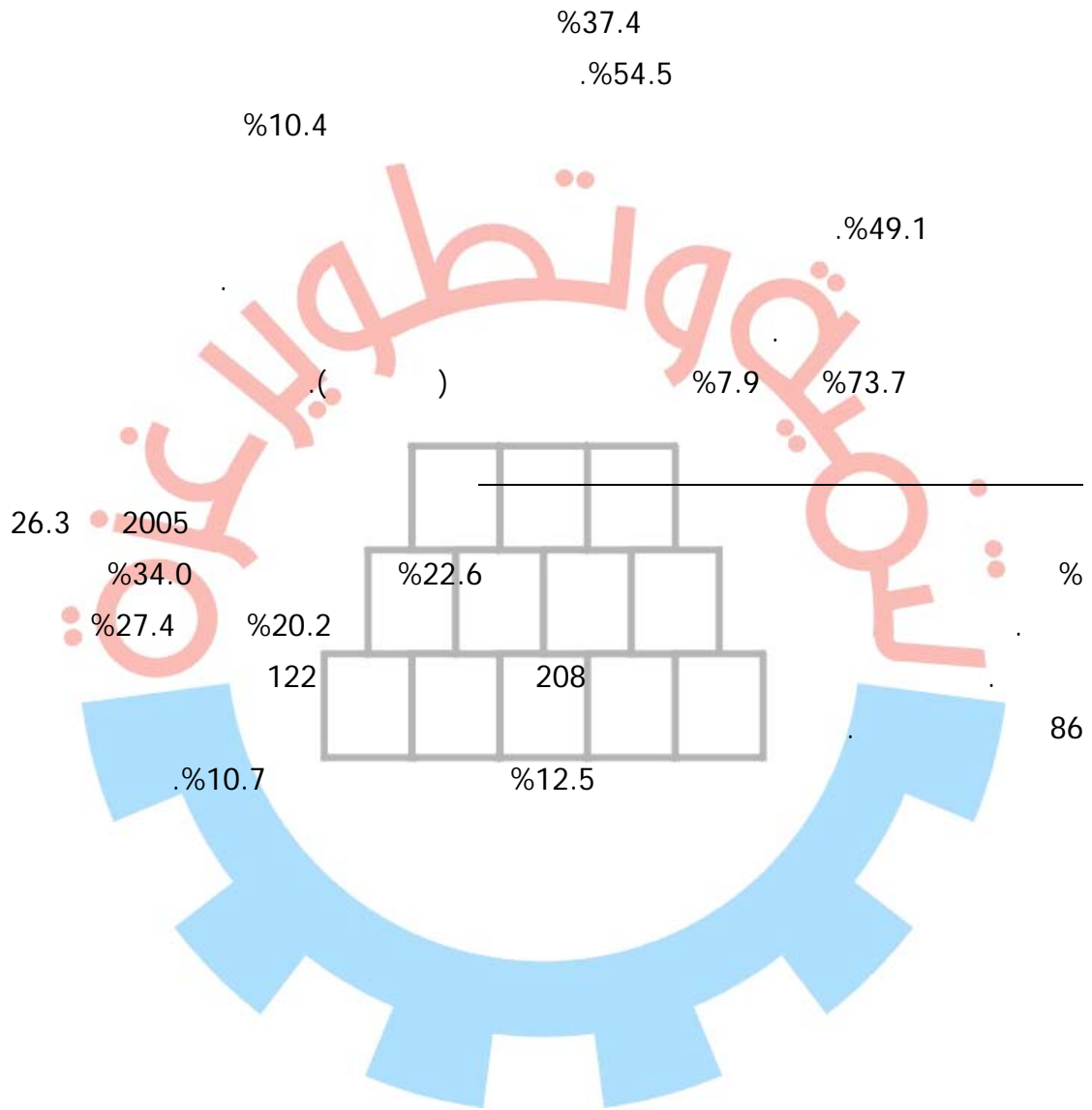


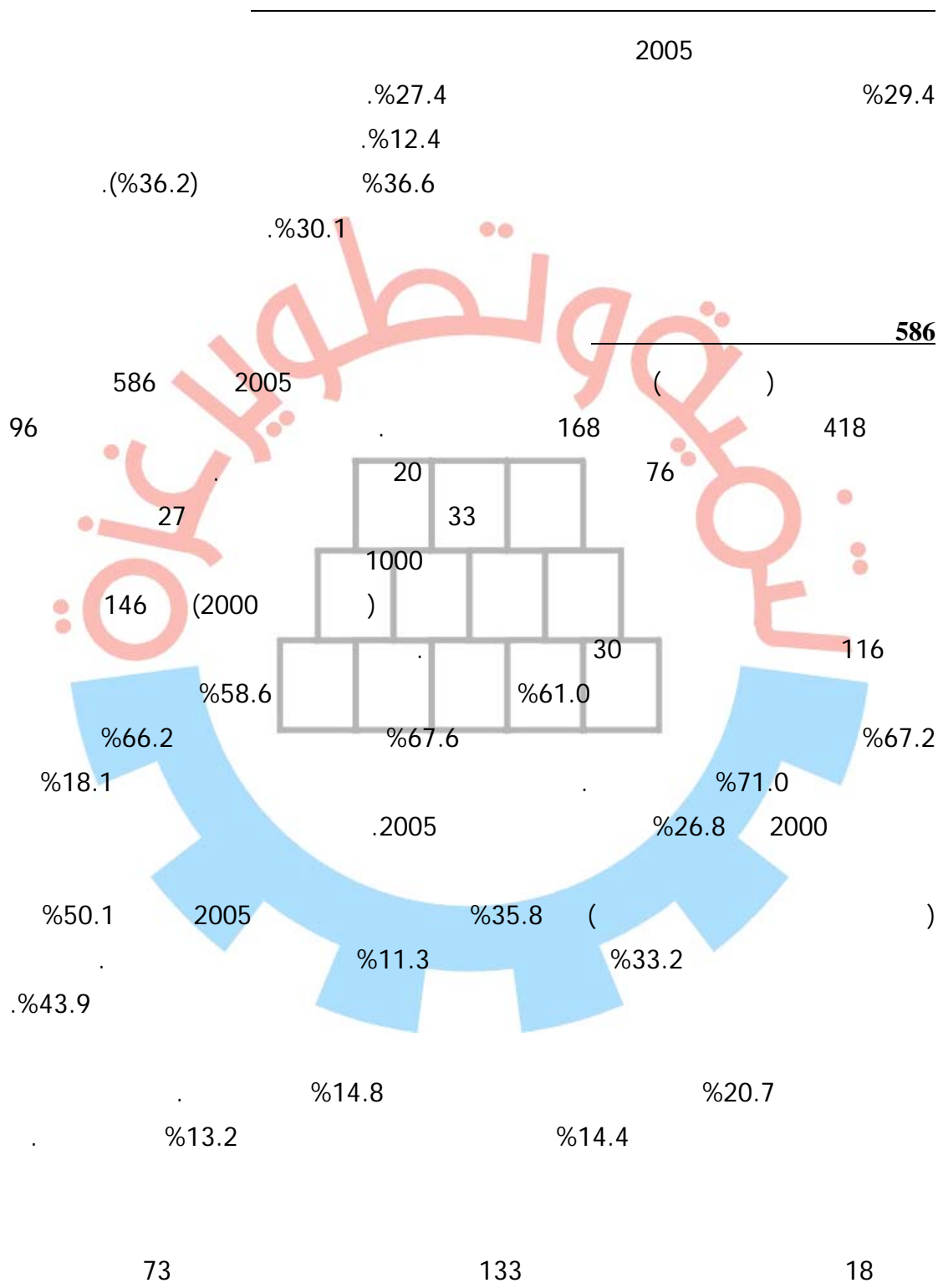




(19) 2005





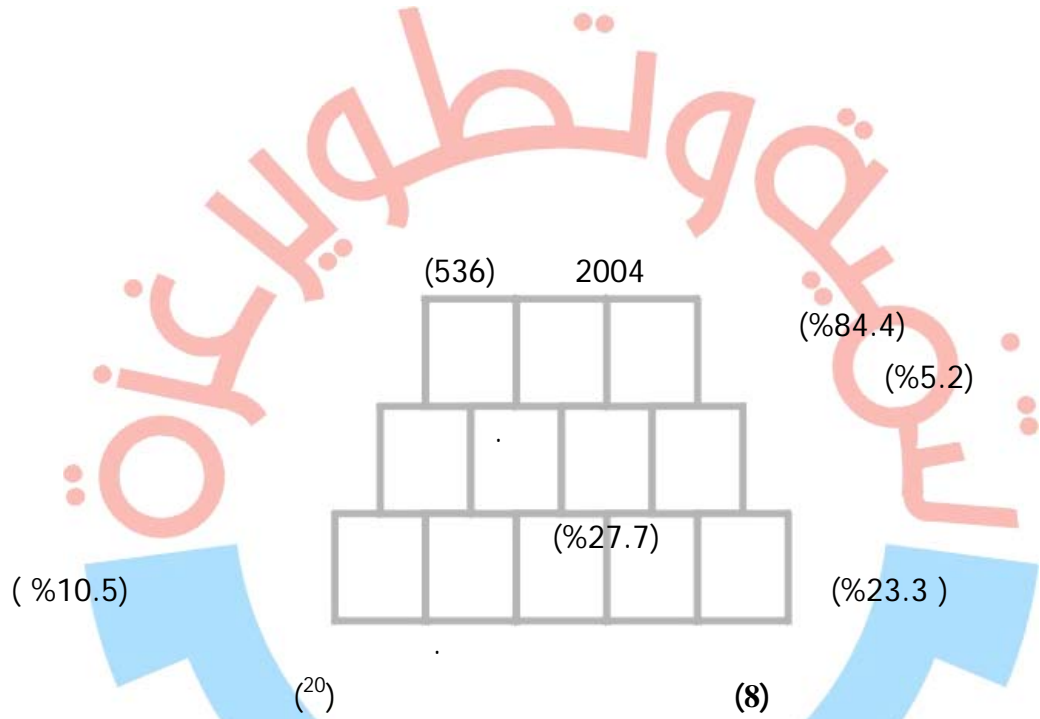


%22.0

2004  
%17.4

60

:

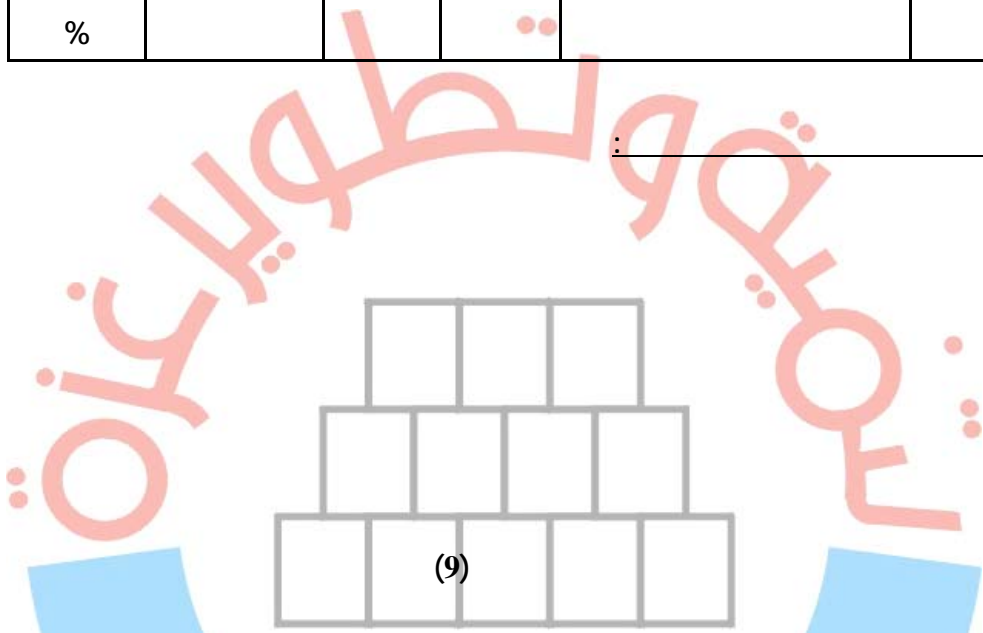


27.7 %	149	59	90		1 -
23.3 %	125	37	88	- -	2 -
18.1 %	97	23	74		3 -

20



15.1 %	81	19	62		4 -
10.5 %	57	22	35		5 -
5.3 %	27	8	19		6 -
100 %	536	168	368		



256	62	194	
211	40	171	
69	23	46	
536	125	411	

(%47.7)

(%39.5)

(%12.8)



\_\_\_\_\_ :

20,849

2004 /

(21) 2004 /

(10)

	161	112	376	134	/	1
783	564	476	729	138		2
1907	226	132	260	00		3
618	1168	1095	486	241		4
2990	796	177	1150	92		5
2215	417	300	1093	80	)	6
1890	696	381	818	201	(	7
2096	1290	917	707	147		8
3061	382	207	727	214		9
1530						

21



	1061	668	1824	206		10
3759						
20849	6761	4465	8170	1453		

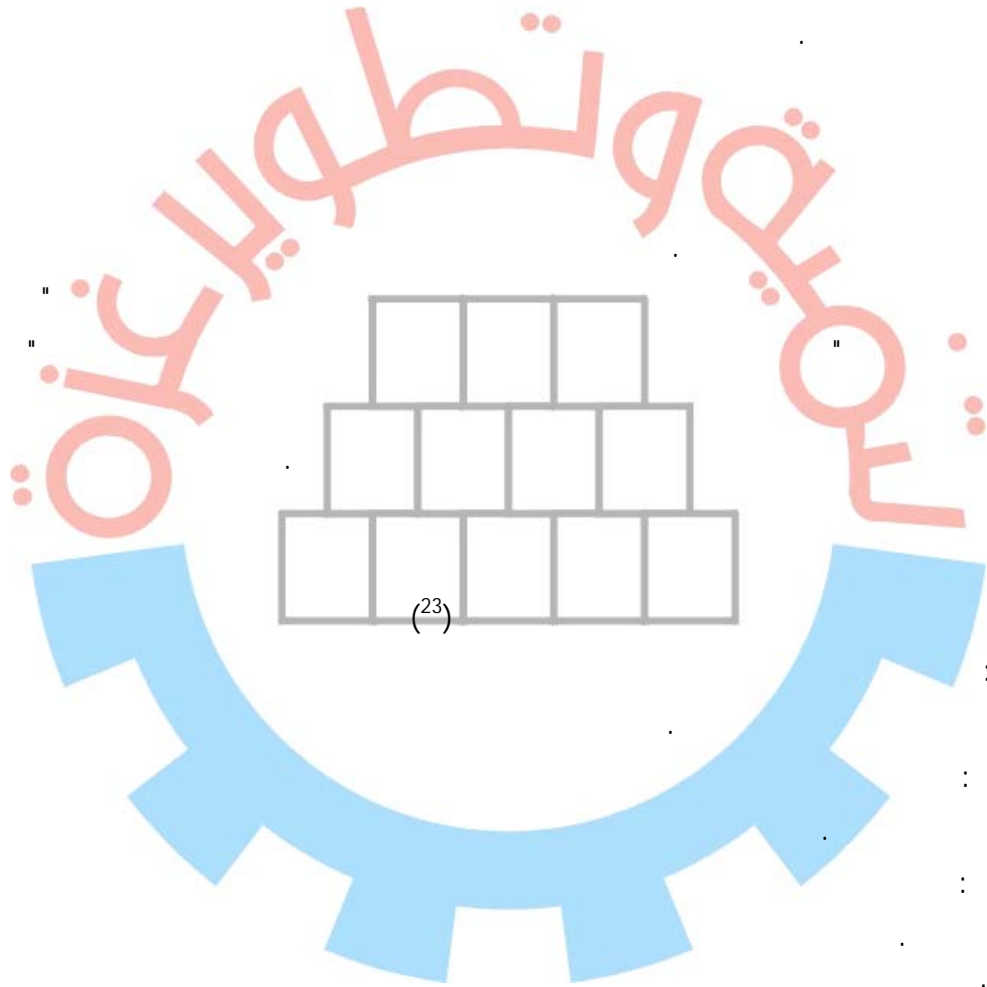
( 11 )

2004/12/31

) ( 11 )  
(<sup>22</sup>) (

<b>1453</b>	<b>15.89</b>	<b>231</b>	<b>84.11</b>	<b>1222</b>	
<b>8170</b>	<b>7.82</b>	<b>639</b>	<b>92.18</b>	<b>7531</b>	
<b>4465</b>	<b>14.96</b>	<b>668</b>	<b>85.04</b>	<b>3797</b>	
<b>6761</b>	<b>19.58</b>	<b>1324</b>	<b>80.42</b>	<b>5437</b>	
<b>20849</b>	<b>13.70</b>	<b>2862</b>	<b>86.30</b>	<b>17987</b>	





3890

1425

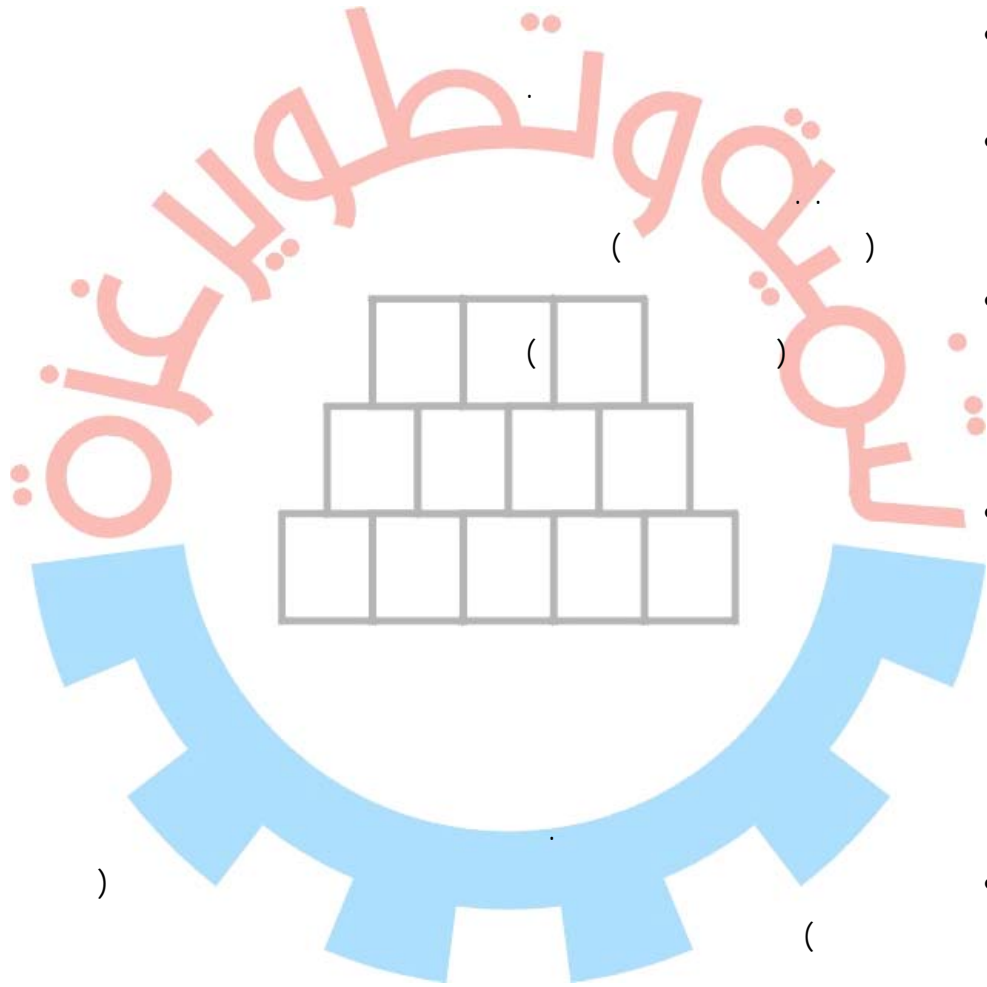
17 /

23









	:	
1999/1998		.1
Office of the United Nations Special Co-ordinator, Report on the Palestinian Economy, Gaza, Spring, 2001		.2
Bongaarts, J. (1992). Population growth and global warming. Population and Development Review (New York), No. 37,		.3
Bongaarts, J. (1992). Population growth and global warming. Population and Development Review (New York), No. 37,		.4
United Nation, Demographic year Book, special Issue, Population Agening and situation of Elderly persons, New York, 1993		.5
- 2025-1997		.6
	1999	.7
		.8
UN, methods of analysis census data on economic activities of the population new york, 1968		.9
- )		.10
1967- -		.11
2004 -	2004	.12
<sup>1</sup> Office of the United Nations Special Co-ordinator, The Impact on the Palestinian Economy of Confrontation, Border Closures and Mobility Restrictions, Gaza, october 2000-september 2001,		.13
2004 -	2004	.14
14-11 :		.15
	2004 /	.16
		.17
2005		.18
		.19
		.20



.21

.22

3890 1425 17 / .23

